

Clear Correct Workflow

For diagnostic cases, orthodontic aligners, or when sending a large restorative case (without drawing margins) to a laboratory, select **Non-Restorative** as the restoration type on the Setup screen and click **Scan** to proceed.

SCAN



Scan Upper Arch



Scan Lower Arch



Use the **Eraser** tool to remove excess data after model generation.



Scan Buccal

Start on the Upper and capture all teeth in prior scans.



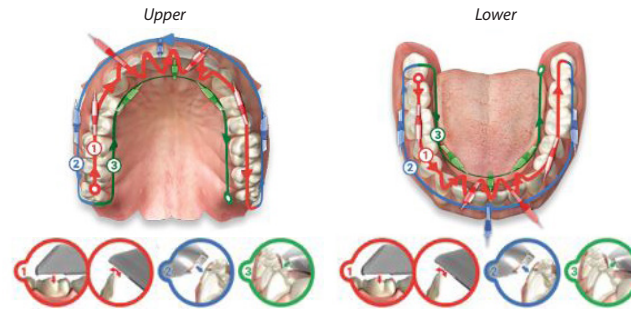
Verify buccal alignment, and re-align if needed.



Verifying the appropriate amount of scan data will ensure aligners will fit properly.

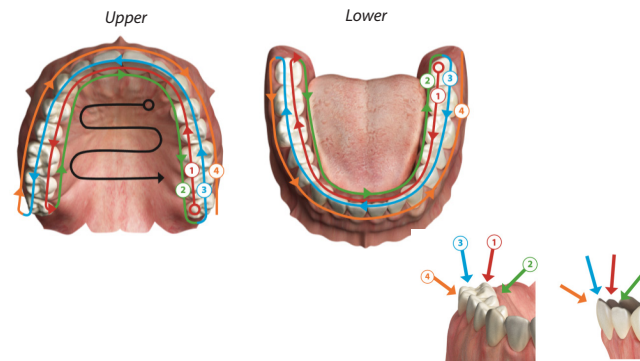
TECHNIQUE

Full Arch Scanning Pattern



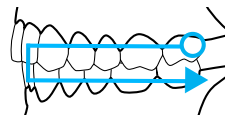
1. Start on the distal of one side, scan the occlusal of the entire arch. On the anteriors, rotate back and forth from the lingual and facial.
2. Scan all of the buccal.
3. Scan all of the lingual.
4. Evaluate the model and rescan any low data areas.
5. Follow the buccal scan pattern below.

Alternative Full Arch Scanning Pattern



1. Start at a 45° angle on the distolingual of one side and scan the entire arch from this angle.
2. Transition to a 90° angle on the lingual and scan the entire arch from this angle.
3. Transition to a 45° angle on the distobuccal and scan the entire arch from this angle.
4. Transition to a 90° angle on the buccal and scan the entire arch from this angle.
5. For scans requiring palatal data, begin the scan in the anterior region and sweep side to side working your way to the distal.
6. Evaluate the model and rescan any low data areas.
7. Follow the buccal scan pattern below.

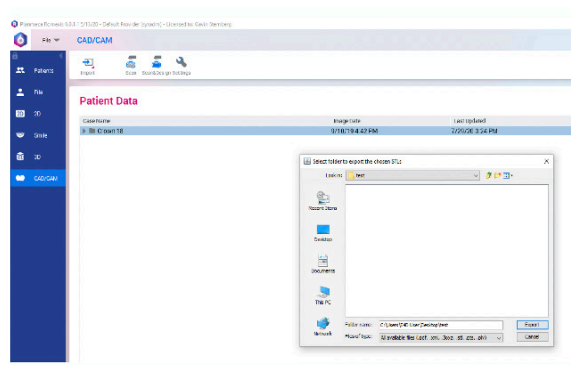
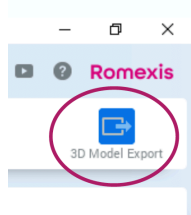
Buccal Scan



Start the buccal segment scan over the gingival tissue of the maxillary arch. Capture the maxillary teeth until the Maxillary Full Arch appears. Then start to capture the mandibular until the Mandibular Full Arch appears. In some instances, the models may not appear. In this case, stop scanning and manually align the models in the **Align Buccal** tool.

EXPORTING STL WITH 3D

1. Click the case in the Patient's Case Files list, then click **3D Model Export**
2. Navigate to the desired destination folder. It is recommended to create a new folder on the desktop to easily find the files later.

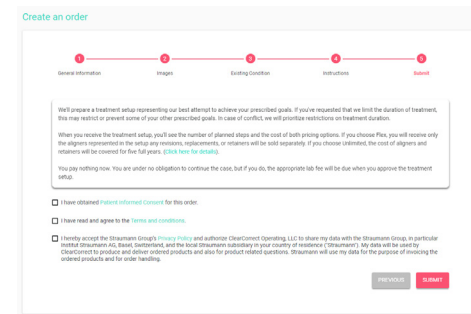


3. Select the file type **.STL** – universal file format for all 3D programs
4. Click **Export**
5. If your case was scanned in a software version prior to PlanCAD 6.3, a message appears **“Use hole filling algorithm to optimize the exported model files?”** If the model is going to be printed, click **Yes**. For all other cases, click **No** unless requested by the lab.
6. Upload to Clear Correct using their portal.

SUBMIT THE CASE TO CLEAR CORRECT

Before you begin, be sure to have your patient read and sign an informed consent and agreement. When you're ready, log in to dr.clearcorrect.com, and click **Submit a Case** in the upper right corner.

Go through the various actions for submitting your case; Doctor Info, Patient Info, Existing Condition, Instructions, Additional Instructions and Photos, X-rays, up to the point where you're going to Upload Scans. *(If you would like detailed instructions on all the previous steps of submitting a case please see the article on Submitting a Case in the Clear Correct Help Center found at www.support.clearcorrect.com)*



Impressions or Scans

Indicate that you will be uploading Planmeca files, this way Clear Correct will know which type of scanner you're using. Note: Clear Correct needs articulated scans of both arches—even if you're only treating one arch.

Drag and drop your saved STL files into the grey drop zones to upload them or click the file selection links.

Submit

You'll be prompted to agree to Clear Correct's current terms & conditions. Keep in mind that you don't have to pay to submit a case, and you're under no obligation to pay—you'll pay the lab fee if you approve a treatment setup.

After you click Submit, you can print a submission record for your records.

Planmeca scans will not need a label (which is the last step of the case submission process). Beyond that—you'll even receive a \$25 discount on your case because you've submitted scans as opposed to PVS impressions! After Clear Correct receives the submission, along with your uploaded photos and Planmeca scans, you should receive a treatment setup within a few days. Review it, approve it, and pay the lab fee, and they'll start making aligners.